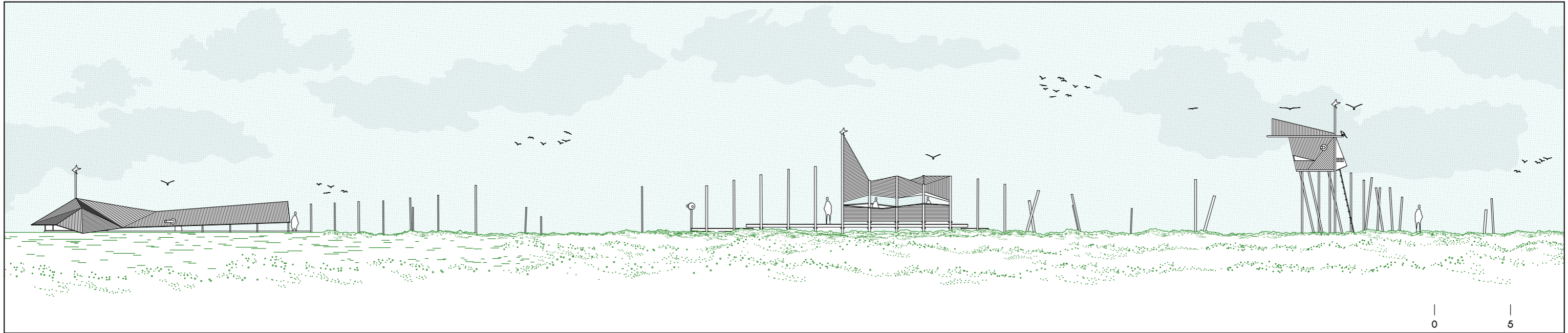




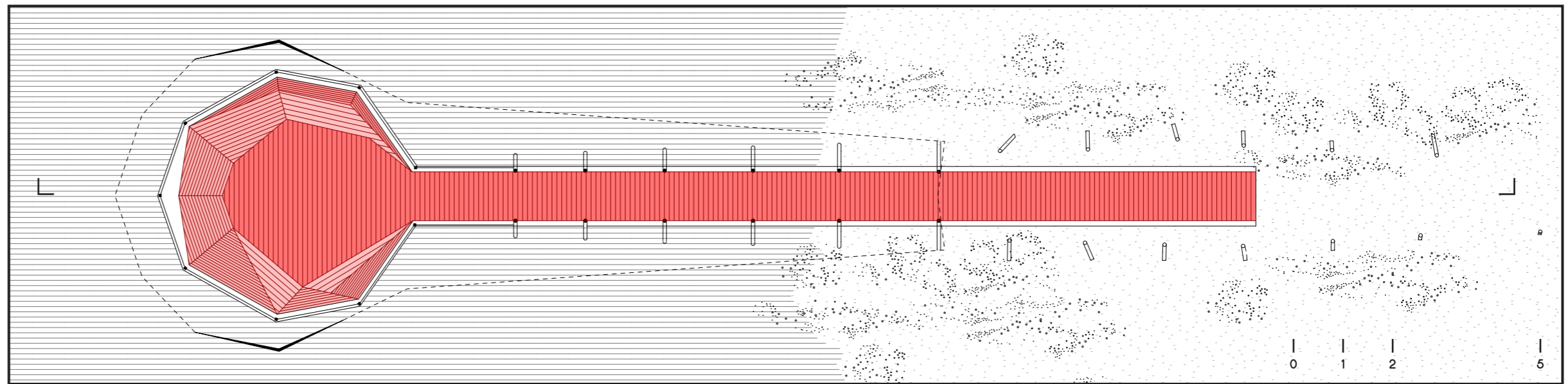
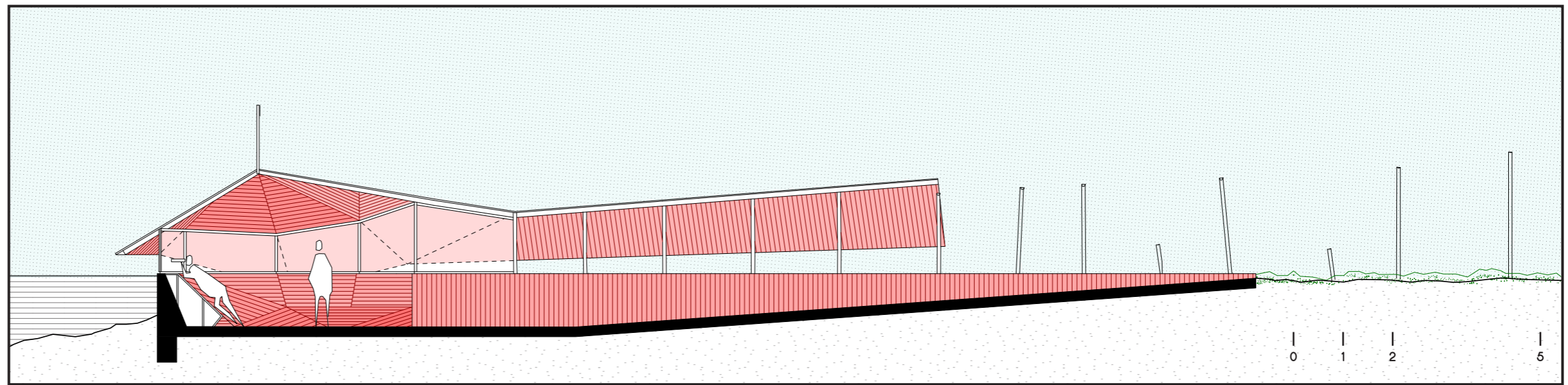
THE WHISPERERS OF THE QUIET STRIP



"THE WHISPERERS" INHABIT THE DJUPIVOGUR AIRSTRIP NOT MERELY AS OBSERVATION POINTS, BUT AS WELCOMING VESSELS DESIGNED TO REVEAL THE LAGOON'S SECRETS TO ALL. CONSTRUCTED FROM MARINE-GRADE CONCRETE AND CLAD IN CHARRED BLACK TIMBER, THE STRUCTURES FEATURE WARM RED WOOD INTERIORS WHERE CUSTOMIZED SEATING MERGES SEAMLESSLY WITH THE WALLS TO ACCOMMODATE VISITORS OF EVERY AGE, BODY SHAPE, AND ABILITY. WITH APERTURES CARVED AT VARIOUS ANGLES AND HEIGHTS TO PRIORITIZE CHILDREN AND ACCESSIBLE VIEWING, FAMILIES ARE INVITED TO STEP INSIDE THESE QUIET, GLOWING BELLIES TO WITNESS THE ANCIENT PATHS OF NESTING AND FEEDING BIRDS TOGETHER.

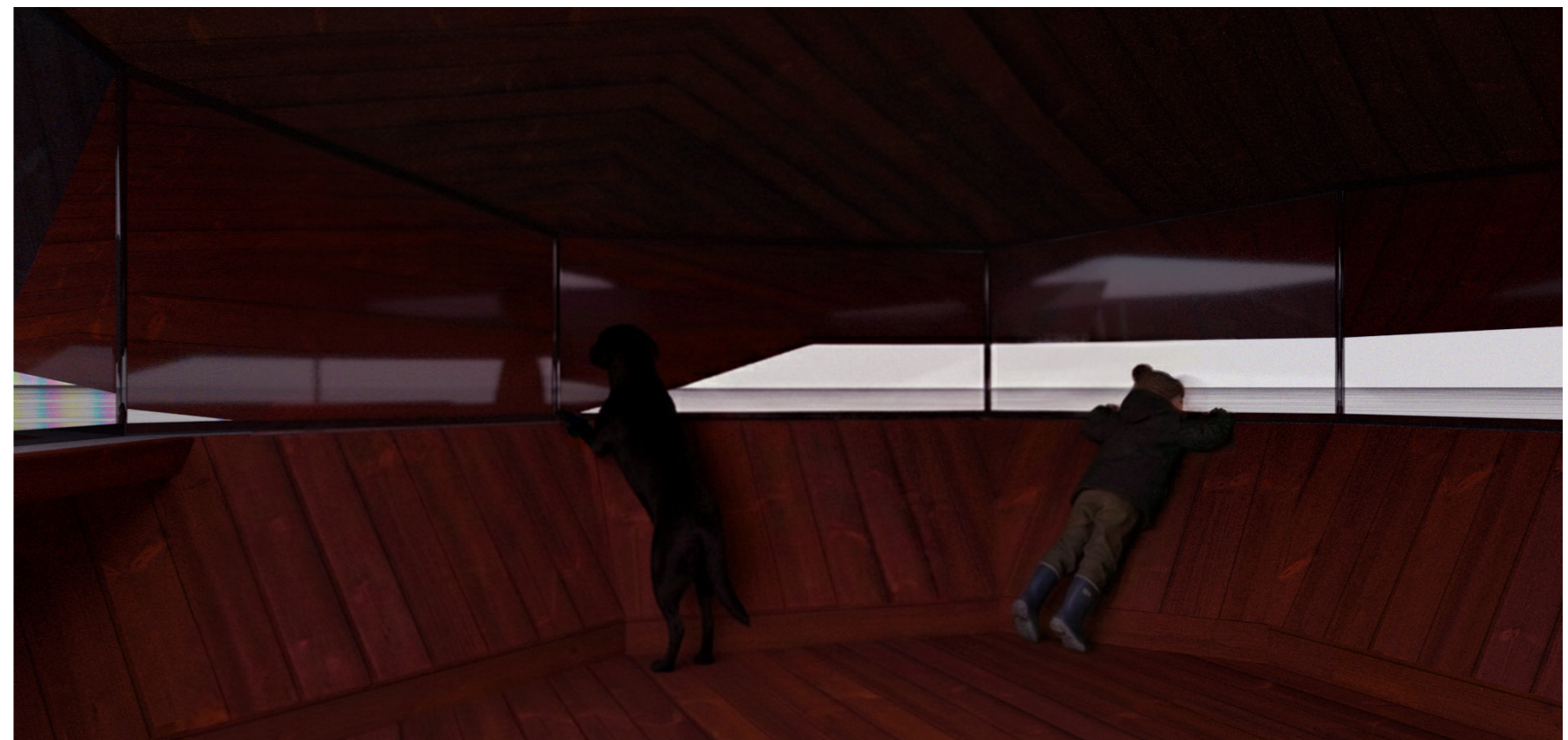
ELEVATION OF THE THREE CREATURES  
SCALE: 1/250

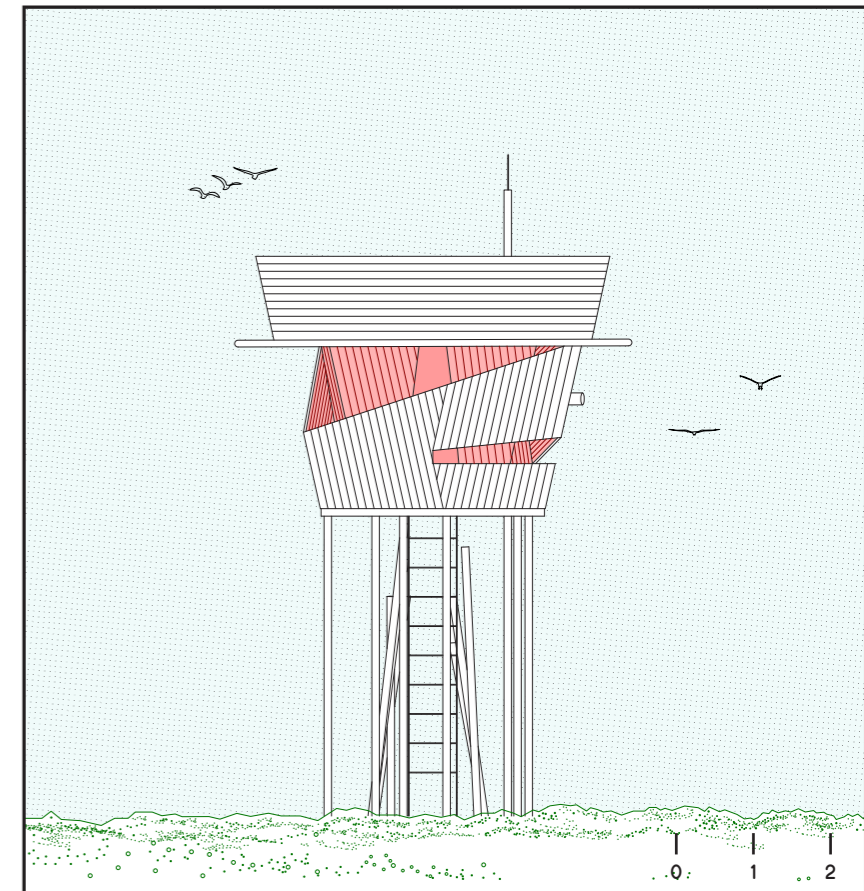
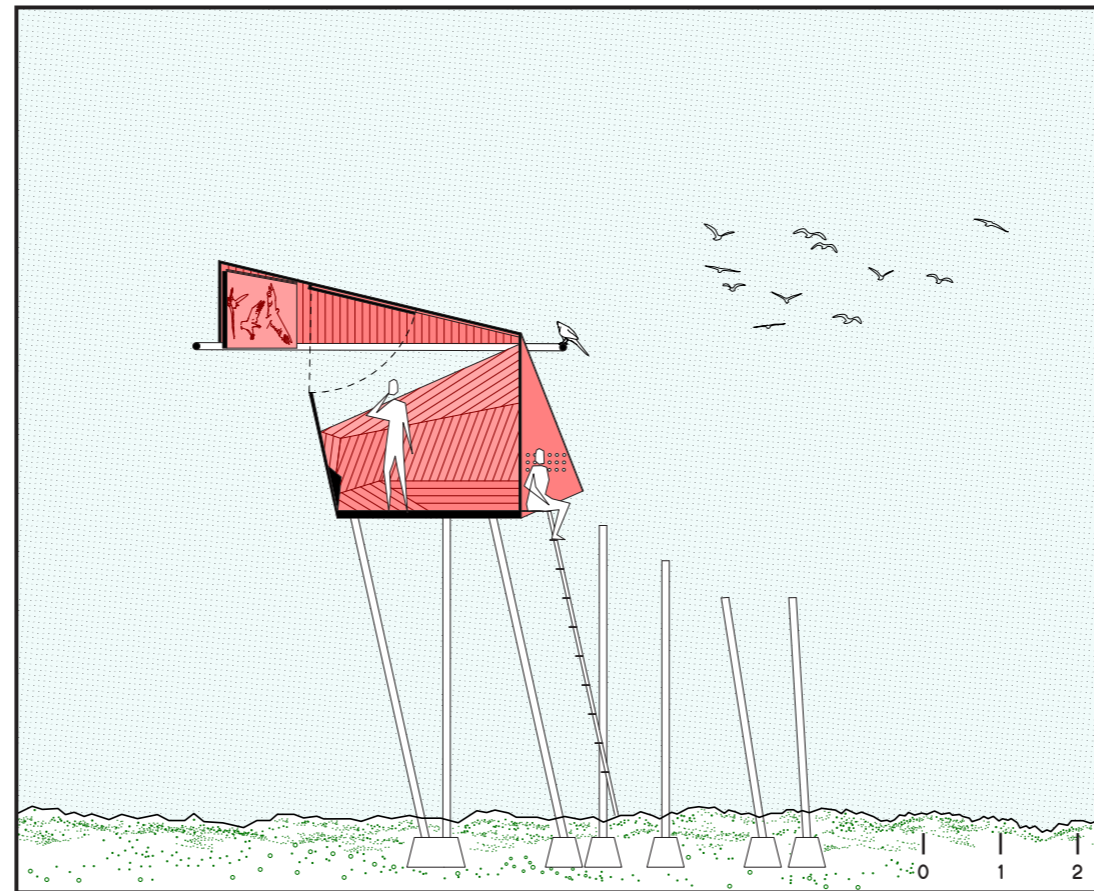
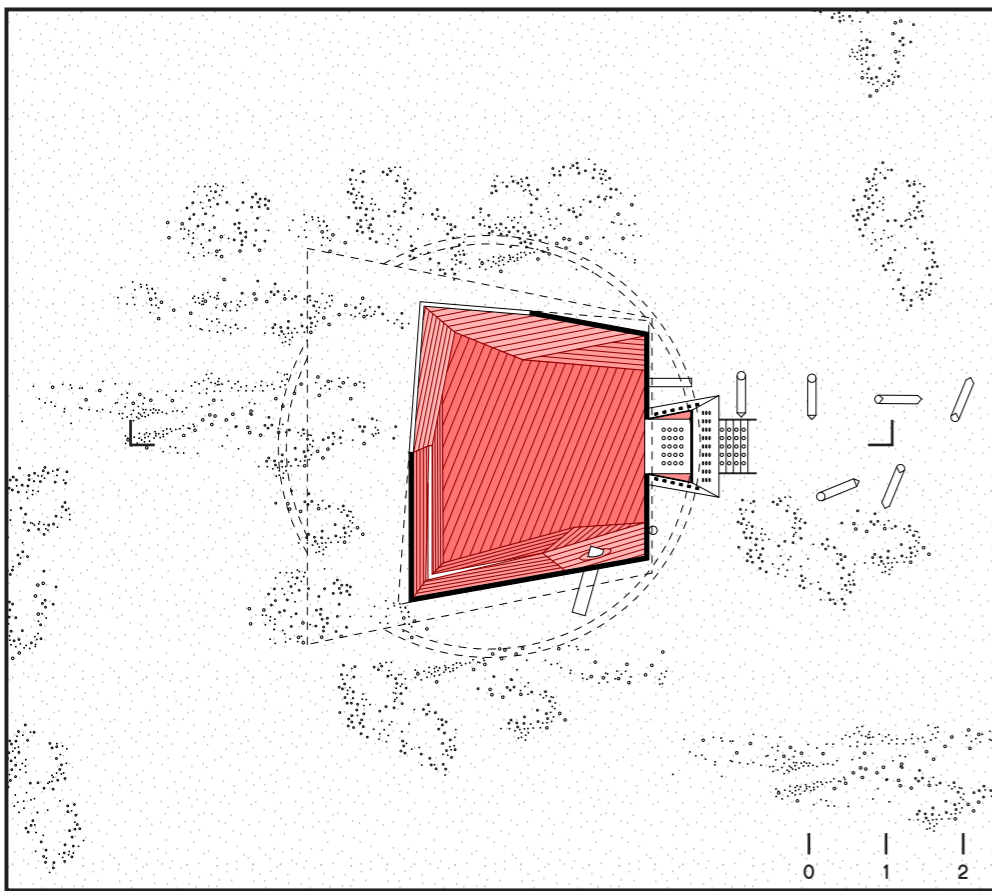




THE WATER CREATURE IS A SPECIALIZED, PARTIALLY SUBMERGED VOLUME DESIGNED TO BRING VISITORS FACE-TO-FACE WITH THE LAGOON'S SURFACE. ADHERING TO THE REQUIREMENT FOR AN INTIMATE PERSPECTIVE, THE PRIMARY SIGHTING WINDOW IS POSITIONED AT 30 CM ABOVE THE WATER LINE, ALLOWING UP TO FIVE SEATED OR LYING OBSERVERS TO VIEW THE FAUNA FROM A DUCK'S-EYE VIEW. THE OBSERVATION SPACE IS ACCESSED BY A 4-METER LONG RAMP LEADING FROM THE SHORE AND INTO THE WATER, CREATING AN ILLUSION OF A FLOATING ROOF. THE STRUCTURE IS A FIXED, HEAVY CONCRETE SHELL, RIGOROUSLY WATERPROOFED AND GLAZED TO WITHSTAND TIDAL CHANGES WHILE MAINTAINING A SEAMLESS VISUAL CONNECTION WITH THE WATER.

01 - WATER CREATURE  
SECTION AND PLAN  
SCALE: 1/100

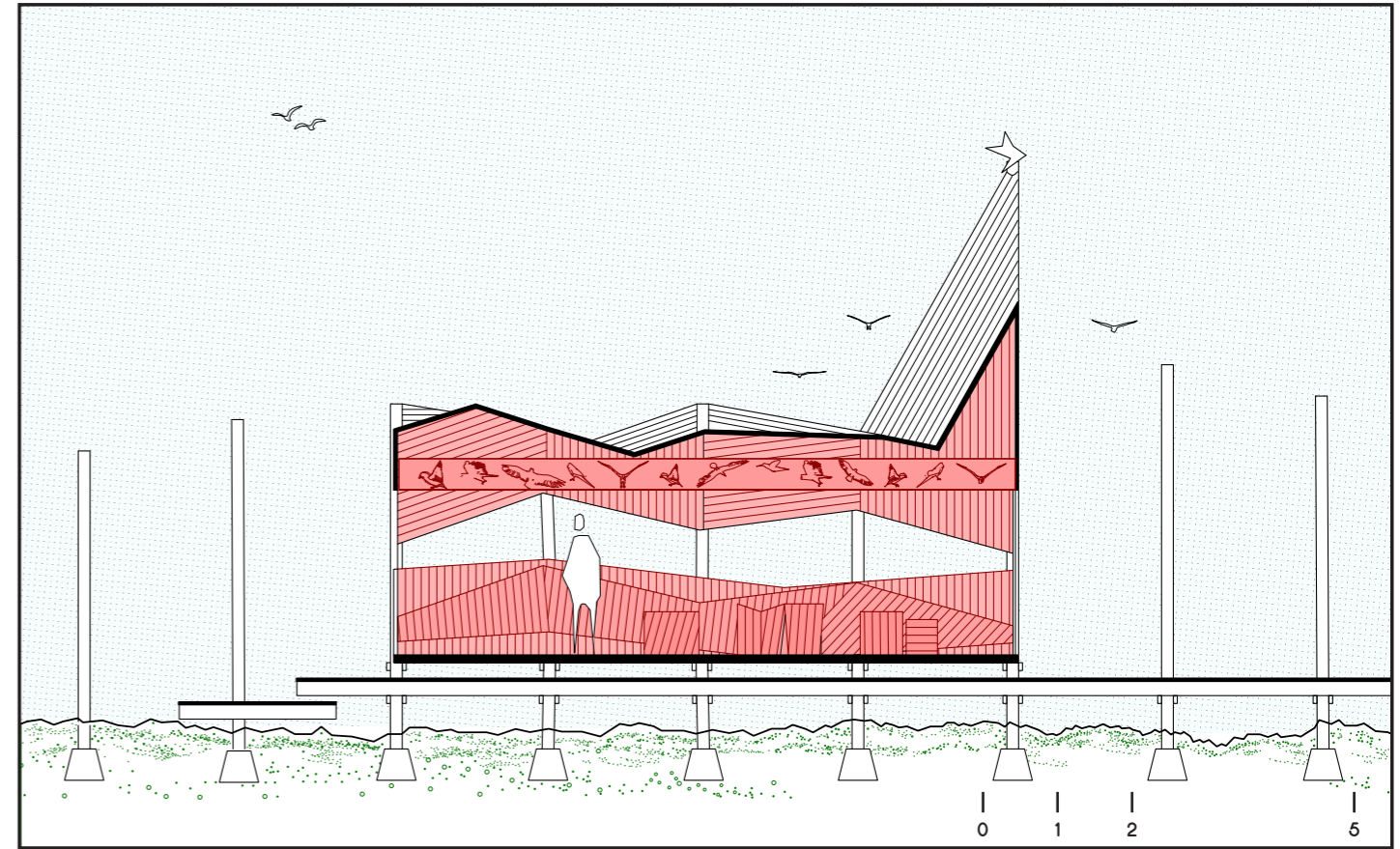
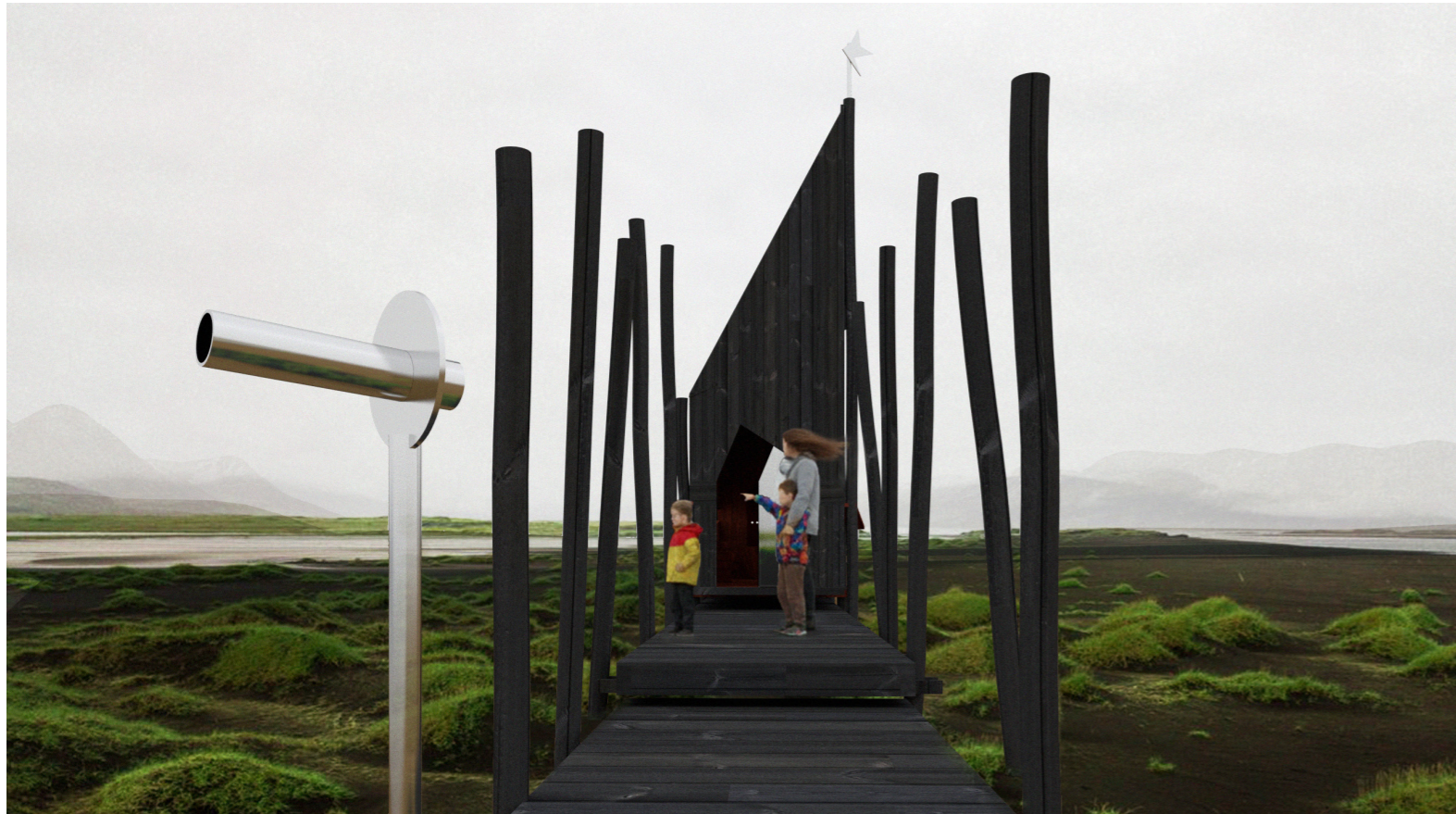




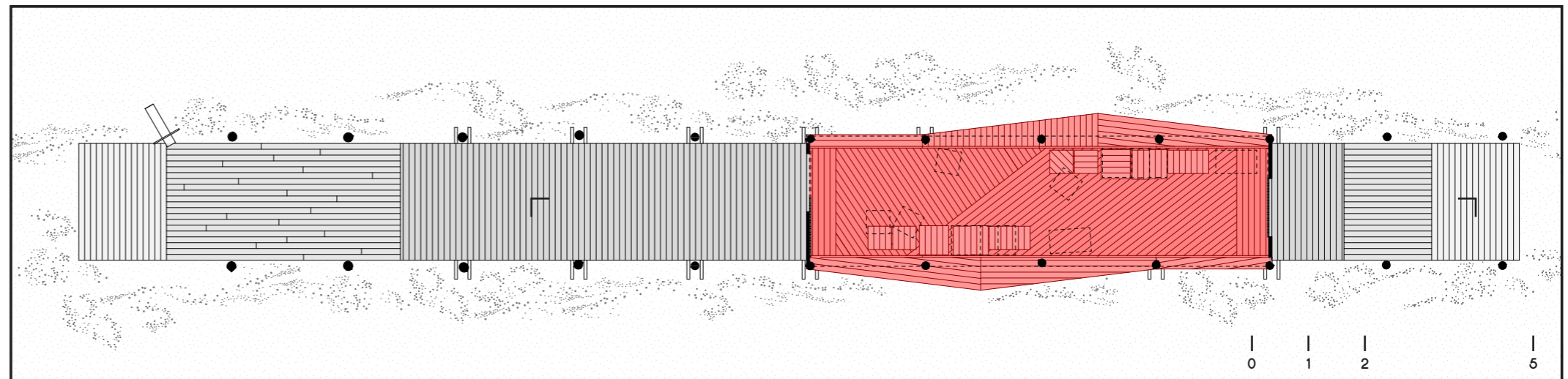
RISING VERTICALLY, THE AIR CREATURE IS A DEDICATED "WATCHTOWER" SIMPLIFIED INTO A SINGLE ELEVATED PLATFORM DESIGNED TO HOST FIVE VISITORS WITHIN THE 7-METER HEIGHT LIMIT. TO HEIGHTEN THE SENSORY CONNECTION WITH THE ENVIRONMENT, THIS STRUCTURE IS LEFT COMPLETELY OPEN WITHOUT GLAZING, EXPOSING OBSERVERS TO THE RAW ICELANDIC AIR. A DISTINCT ACOUSTIC FEATURE CROWNS THE ASCENT: A METALLIC PERFORATED ENCLOSURE SITS DIRECTLY ABOVE THE ACCESS LADDER, ACTING AS A FOCUSED LISTENING DEVICE THAT CAPTURES AND AMPLIFIES THE CALLS OF THE WETLAND FAUNA.



02 - AIR CREATURE  
 PLAN, SECTION, ELEVATION  
 SCALE: 1/100



ANCHORING THE TRIO IS THE GROUND CREATURE - A REINTERPRETATION OF THE TRADITIONAL WATCH HUT. THIS SINGLE-STORY ELEMENT IS SIZED TO HOST A MAXIMUM OF TEN PEOPLE. OFFERING A FLEXIBLE LAYOUT FOR GROUPS AND PROFESSIONALS. THE DESIGN FEATURES A DYNAMIC SYSTEM OF SLIDING BLACK WOODEN SHUTTERS; THESE ALLOW THE "CREATURE" TO CLOSE ITS EYES AGAINST STORMS OR SLIDE OPEN TO REVEAL THE SIGHTING WINDOWS POSITIONED AT THE STANDARD 1.6-METER EYE LEVEL. PROVIDING A VERSATILE SHELTER THAT RESPONDS DIRECTLY TO THE WEATHER CONDITIONS.



03 - GROUND CREATURE  
 PLAN AND SECTION  
 SCALE: 1/100